

Floor Elements
地面组件

Base Plate
隔断支脚

To support strut profile mounted between sections of machine guard system. Expansion bolts chocked into floor can offer very high stability.

隔断支脚用于防护单元之间型材的底部支撑，使用膨胀螺栓置入地下更能提高稳定性。

Material and Color: diecast steel with anticorrosive

材质和颜色：铸钢 防腐化学处理

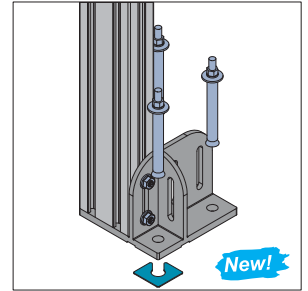
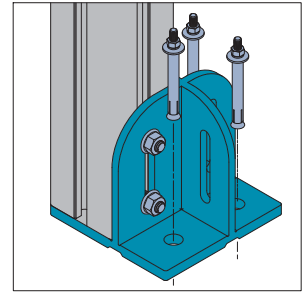
Base Plate Gasket

隔断支脚垫片

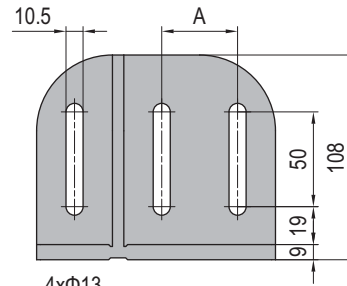
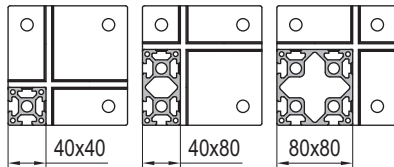
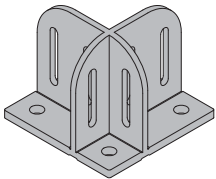
New!

For vertical alignment on uneven floors.

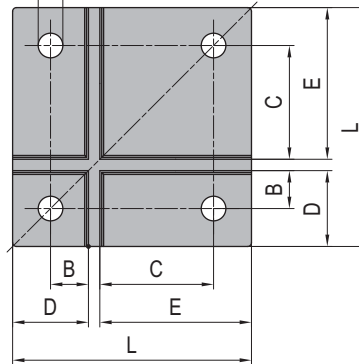
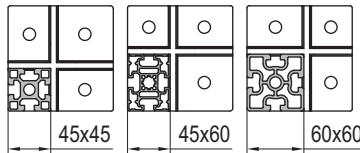
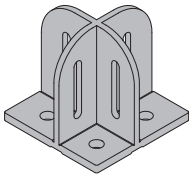
隔断支脚垫片用于地面不平，调整型材与地面垂直度。



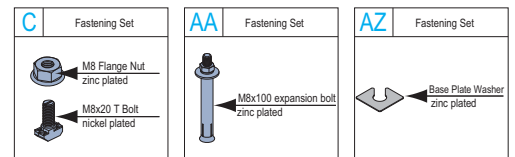
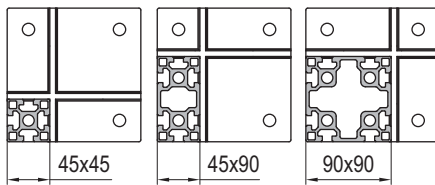
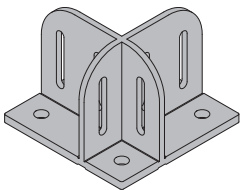
Base Plate-4080
隔断支脚-4080



Base Plate-4560
隔断支脚-4560



Base Plate-4590
隔断支脚-4590



Description 产品描述	L (mm)	A (mm)	B (mm)	C (mm)	D (mm)	E (mm)	Fastening Set 紧固组件	Mass 重量 (g)	Part No. 订购编号
Base Plate-4080 (pcs)/隔断支脚-4080 (单个供货)	126	40	20	60	40	80	2xAZ	1930	5.11.4080
Base Plate-4080 (set A)/隔断支脚-4080 (成套供货A)							4xC+3xAA+2xAZ	2240	5.11.4080.STA
Base Plate-4080 (set B)/隔断支脚-4080 (成套供货B)							6xC+3xAA+2xAZ	2290	5.11.4080.STB
Base Plate-4080 (set C)/隔断支脚-4080 (成套供货C)							8xC+3xAA+2xAZ	2340	5.11.4080.STC
Base Plate-4560 (pcs)/隔断支脚-4560 (单个供货)	111	22.5	30	45	60	2xAZ	1600	5.11.4560	
Base Plate-4560 (set)/隔断支脚-4560 (成套供货)						4xC+3xAA+2xAZ	1910	5.11.4560.ST	
Base Plate-4590 (pcs)/隔断支脚-4590 (单个供货)	141	45	22.5	67.5	45	90	2xAZ	2330	5.11.4590
Base Plate-4590 (set A)/隔断支脚-4590 (成套供货A)							4xC+3xAA+2xAZ	2640	5.11.4590.STA
Base Plate-4590 (set B)/隔断支脚-4590 (成套供货B)							6xC+3xAA+2xAZ	2690	5.11.4590.STB
Base Plate-4590 (set C)/隔断支脚-4590 (成套供货C)							8xC+3xAA+2xAZ	2740	5.11.4590.STC