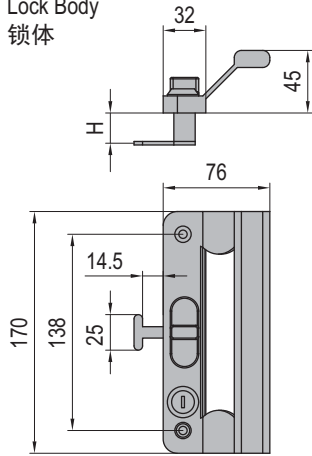
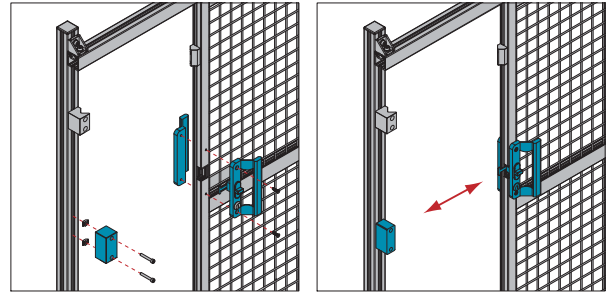
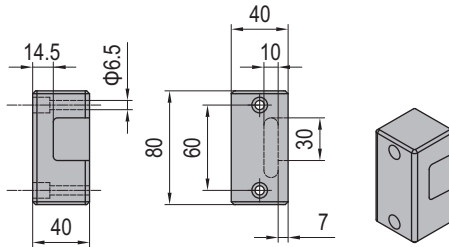


Components for Sliding Door
推拉门组件
Lock for Sliding Door
推拉门锁

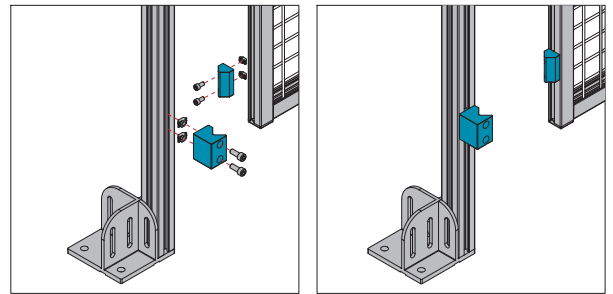
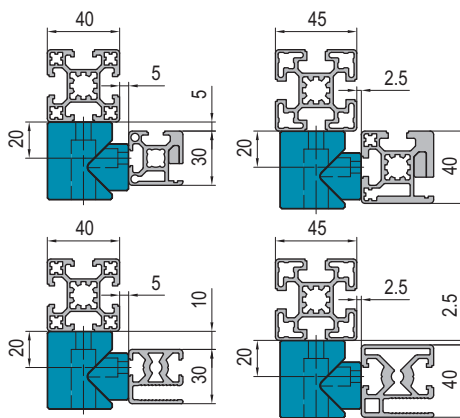
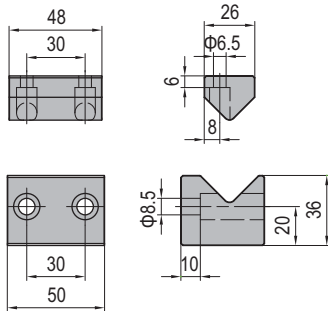
 Material: Lock Body: steel, black electrophoresis Lock Slot:aluminum
 材质：锁体-碳钢黑色电泳 锁卡槽-铝合金

Lock Body
锁体

Lock Slot
锁卡槽


HZ	Fastening Set	HG	Fastening Set
	M6x40 Bolt zinc plated		M6x40 Bolt zinc plated
	M6x55 Bolt zinc plated		M6x45 Bolt zinc plated
	M6 T Nut nickel plated		M6 T Nut nickel plated

Description 描述	H (mm)	Fastening Set 紧固组件	Mass 重量(g)	Part No. 订购编号
Lock for Sliding Door of Protective Grille Unit-PG30 推拉门锁-防护网单元-30系列	18	2xHG	906	PNDS30.LK
Lock for Sliding Door of Protective Grille Unit-PG40 推拉门锁-防护网单元-40系列	20	2xHZ	910	PNDS40.LK
Lock for Sliding Door of Clamping Profile Unit-PG30 推拉门锁-防护罩单元-30系列	12	2xHG	906	PPDS30.LK
Lock for Sliding Door of Clamping Profile Unit-PG40 推拉门锁-防护罩单元-40系列	18	2xHZ	910	PPDS40.LK

Guide Block for Sliding Door
推拉门导向块

 Material: POM
 材质：POM


HD	Fastening Set	HE	Fastening Set	HF	Fastening Set
	M8x20 Bolt zinc plated		M6x12 Bolt zinc plated		M6x16 Bolt zinc plated
	M8 T Nut nickel plated		M6 T Nut nickel plated		M6 T Nut nickel plated

Description 描述	Fastening Set 紧固组件	Mass 重量(g)	Part No. 订购编号
Guide Block for Sliding Door-PG30 推拉门导向块-30系列	2xHD+2xHE	151	PBDS30.DS
Guide Block for Sliding Door-PG40 推拉门导向块-40系列	2xHD+2xHF	157	PBDS40.DS