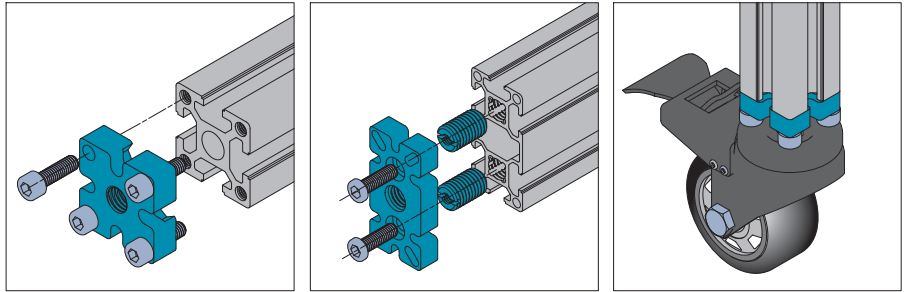


Floor Elements  
地面组件

Mounting Plate  
支脚连接板

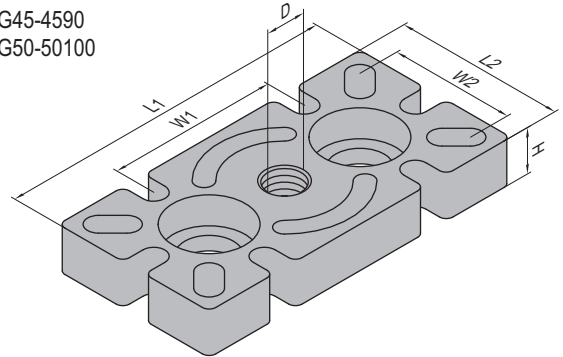
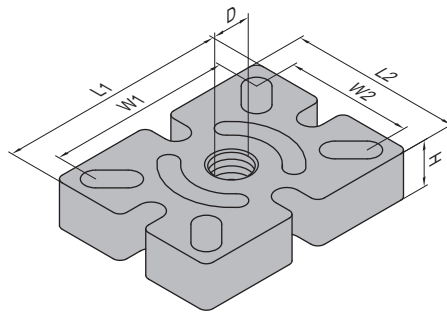
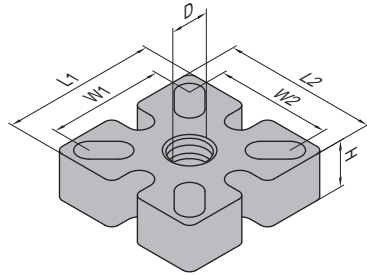
To attach leveling foot or castor to strut profile end.  
连接支脚或脚轮与型材端面。  
Material and Color: spray coating steel, silver  
材质和颜色: 碳钢喷涂 银色







PG40-4040  
PG45-4545  
PG50-5050

PG40-4060  
PG45-4560

PG30-3060  
PG40-4080  
PG45-4590  
PG50-50100



FI	Fastening Set	FZ	Fastening Set
	M6x25 Bolt zinc plated		M6x20 Bolt zinc plated
	M10→M6 Hole Reducer Bolt nickel plated		M12→M6 Hole Reducer Bolt nickel plated

Description 产品描述	D	L1 (mm)	L2 (mm)	W1 (mm)	W2 (mm)	H (mm)	Fastening Set 紧固组件	Mass 重量 (g)	Part No. 订购编号
Mounting Plate-PG40-4040 支脚连接板-40系列-4040	M12	40	40	30	30	12	4x(M6x20)	128	5.32.40.4040
Mounting Plate-PG45-4545 支脚连接板-45系列-4545	M12	45	45	33	33		4xFI	203	5.32.45.4545
Mounting Plate-PG50-5050 支脚连接板-50系列-5050	M12	50	50	35	35		4x(M8x20)	218	5.32.50.5050
Mounting Plate-PG40-4060 支脚连接板-40系列-4060	M12	60	40	50	30		4x(M6x20)	176	5.32.40.4060
Mounting Plate-PG45-4560 支脚连接板-45系列-4560	M12	60	45	48	33		4xFI	220	5.32.45.4560
Mounting Plate-PG30-3060 支脚连接板-30系列-3060	M12	60	30	30		10	2xFZ	133	5.32.30.3060
Mounting Plate-PG40-4080 支脚连接板-40系列-4080	M12	80	40	40	30	12	2x(M14x25)	272	5.32.40.4080.M12
	M16							270	5.32.40.4080.M16
Mounting Plate-PG45-4590 支脚连接板-45系列-4590	M12	90	45	45	33		2x(M14x25)	332	5.32.45.4590.M12
	M16							330	5.32.45.4590.M16
Mounting Plate-PG50-50100 支脚连接板-50系列-50100	M12	100	50	50	35		2x(M14x25)	332	5.32.50.50100.M12
	M16					329		5.32.50.50100.M16	
	M20					327		5.32.50.50100.M20	

Note: offer per set (including fastening set).  
备注: 成套供货 (包含紧固组件)。