

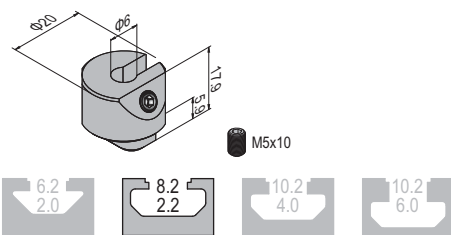
Panel Installation Elements 板材组件

Mounting Block New! 夹网螺母块

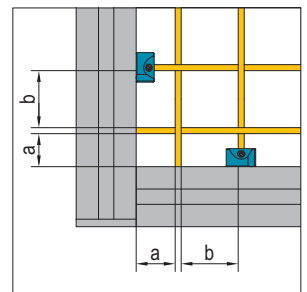
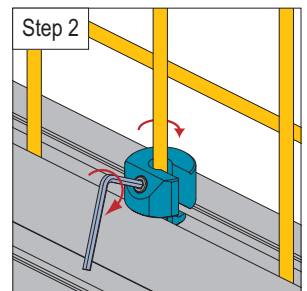
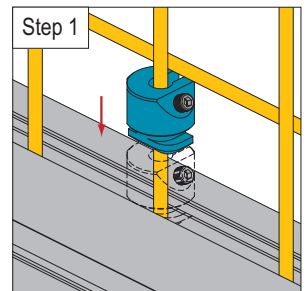
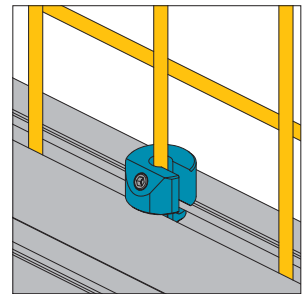
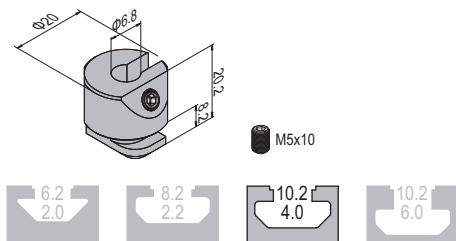
Mounting block is used for fixing the mesh of $\Phi 4$ to the standard profiles, which has a better physical properties.
夹网螺母块适用于网丝直径为4mm的焊接网和编织网的固定, 拥有较强的连接强度。

Material: diecast zinc
材质: 压铸锌合金

Mounting Block-8 夹网螺母块-8



Mounting Block-10 夹网螺母块-10



Note: The distance (a) between the nearest meshes and profiles have to be more than 20mm and less than $b+5\text{mm}$ (b is the distance of the meshes). And the optimum distance between mounting blocks is 300mm to insure the structure intensity.
备注: 网丝与型材间距a需满足 $20\text{mm} < a < b+5\text{mm}$ (b为该网的网格距离寸)建议螺母块安装间距300mm以确保安装强度。

Description 产品描述	Mass 重量 (g/pcs)	Part No. 订购编号
Mounting Block-8(with top thread) 夹网螺母块-8(含凹端顶丝)	20	6.41.08.01
Mounting Block-10(with top thread) 夹网螺母块-10(含凹端顶丝)	22	6.41.10.04.01