

**Connecting Elements for Clamping Profile Unit**  
 防护罩单元连接件组件

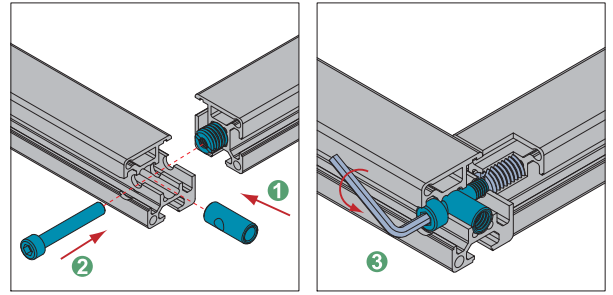
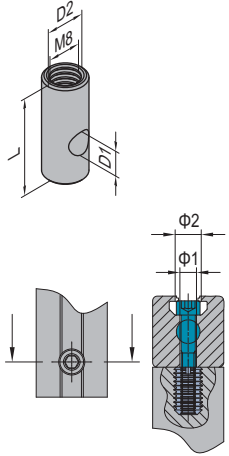
**Bushing**  
 连接套





To realize quick installation of clamping profile unit with connecting elements.

用于实现防护单元与连接组件的快速安装。

Material : zinc plated steel

材质：碳钢镀锌



CI	Fastening Set	GD	Fastening Set
	M6x40 Bolt zinc plated		M8x45 Bolt zinc plated
	M12-M6 Hole Reducer Bolt nickel plated		M14-M8 Hole Reducer Bolt nickel plated

Description 描述	L	D1	D2	φ1	φ2	Fastening Set 紧固组件	Mass 重量(g)	Part No. 订购编号
Bushing-PG30 (set) 连接套-30系列 (成套供货)	25	6	10	7	11	1xCI	20	PPJ30.ST
Bushing-PG40 (set) 连接套-40系列 (成套供货)	30	8	12	9	14	1xGD	40	PPJ40.ST

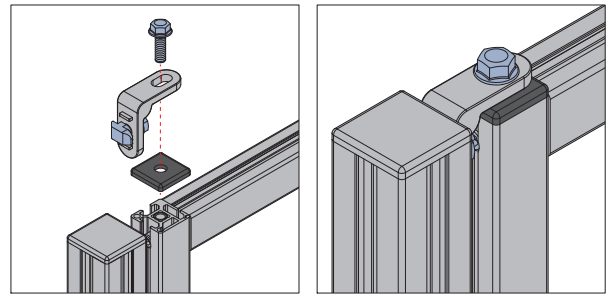
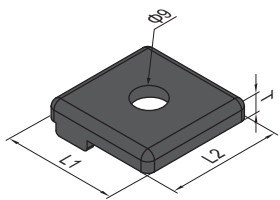
**End Cap for Clamping Profile**  
 防护罩型材端盖

To prevent injury and improve end appearance, the bore hole enables assembly of profile and connectors.

端盖可以预防划伤,使型材更美观.中心孔用于实现型材与螺栓的连接。

Material : Black ABS

材质：ABS 颜色：黑色



Description 描述	L1 (mm)	L2 (mm)	T (mm)	Mass 重量(g)	Part No. 订购编号
End Cap for Clamping Profile-PG30-3030 防护罩型材端盖-30系列-3030	30	30	5	4	4.12.30.3030.SM
End Cap for Clamping Profile-PG40-4040 防护罩型材端盖-40系列-4040	40	40		6	4.12.40.4040.SM