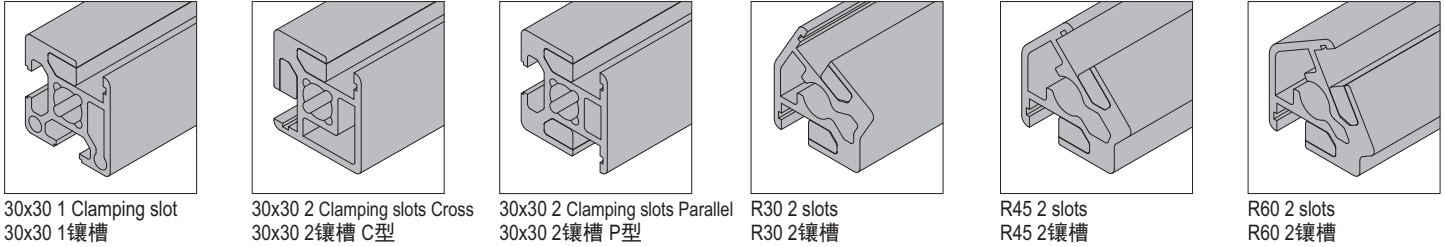
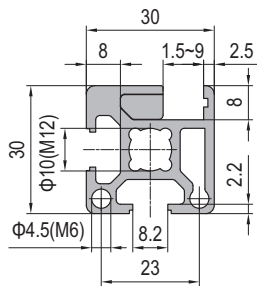
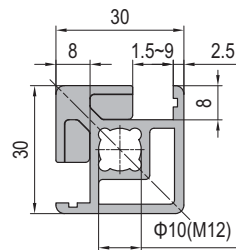
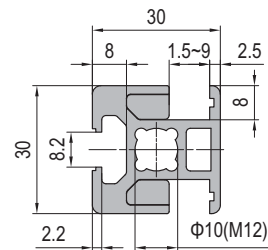
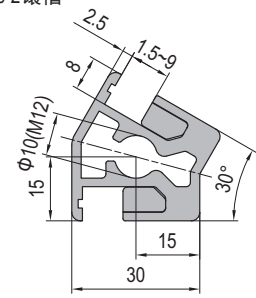
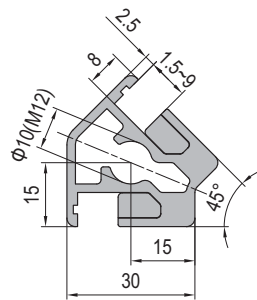
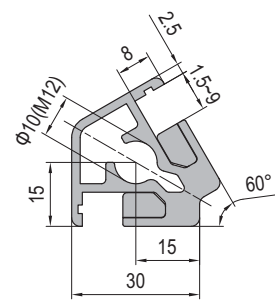


**Clamping Profile PG30**  
**防护罩型材 30系列**


Clamping Profiles only could insert the panels, and machining will be needed on the with thickness range of 1.5-10mm. profiles to fasten the panels in appropriate positions, the recommended distance of machining is 300mm.

防护罩型材只能用于板状物的安装，板厚度范围为1.5-10mm，安装时需要在型材上加工顶丝孔，建议顶丝安装间距为300mm。

 30x30 1 Clamping slot  
30x30 1 镶槽

 30x30 2 Clamping slots Cross  
30x30 2 镶槽 C型

 30x30 2 Clamping slots Parallel  
30x30 2 镶槽 P型

 R30 2 slots  
R30 2 镶槽

 R45 2 slots  
R45 2 镶槽

 R60 2 slots  
R60 2 镶槽


Connector selection  
推荐连接件

Machine Guard System  
机械防护系统样册



Bushing  
连接套-30 ..... PPJ30.ST



Hole Reducer Bolt  
变径螺栓 ..... 2.51.12.06



End Cap for clamping profile  
改制防护罩端盖 ..... 4.12.30.3030.SM

Description 产品描述	Moment of Inertia 惯性矩 Ix(cm <sup>4</sup> )	Moment of Inertia 惯性矩 Iy(cm <sup>4</sup> )	Moment of Resistance 弯矩 Wx(cm <sup>3</sup> )	Moment of Resistance 弯矩 Wy(cm <sup>3</sup> )	Mass 重量 (kg/m)	Part No. 订购编号
Clamping Profile PG30 30x30 1 Clamping slot 防护罩型材 30系列 30x30 1 镶槽	3.7	2.7	1.8	1.4	1.1	1.21.30.030030.01
Clamping Profile PG30 30x30 2 Clamping slots Cross 防护罩型材 30系列 30x30 2 镶槽 C型	4.0	2.6	1.9	1.3	1.3	1.21.30.030030.02C
Clamping Profile PG30 30x30 2 Clamping slots Parallel 防护罩型材 30系列 30x30 2 镶槽 P型	3.5	3.3	2.2	2.2	1.3	1.21.30.030030.02P
Clamping Profile PG30 R30 2 Clamping slots 防护罩型材 30系列 R30 2 镶槽	4.2	2.9	2.3	1.5	1.4	1.21.30.030030.R30
Clamping Profile PG30 R45 2 Clamping slots 防护罩型材 30系列 R45 2 镶槽	4.1	2.7	2.2	1.4	1.4	1.21.30.030030.R45
Clamping Profile PG30 R60 2 Clamping slots 防护罩型材 30系列 R60 2 镶槽	4.1	2.6	2.1	1.3	1.4	1.21.30.030030.R60