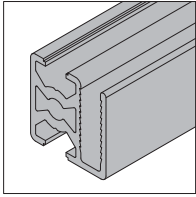
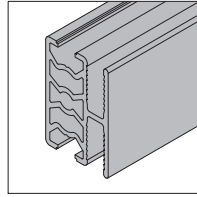


Protective Grille Profile PG30
防护网型材 30系列



30x30 1 Grille slot
30x30 1槽

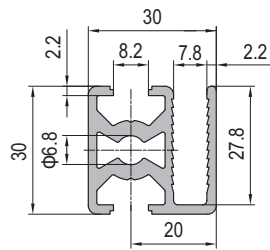


30x45 2 Grille slots
30x45 2槽

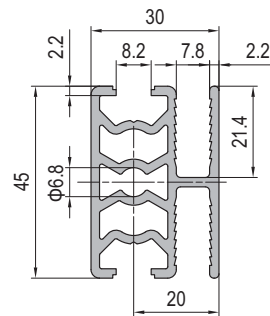
Protective Grille Profile could insert not only the meshes, but also the panels, and the spring clamping nut will be used if inserting panels (the recommended distance of nut is 300mm).

防护网型材既可安装编织网、焊接网又可安装有机玻璃、亚克力等板状物。安装板状物时需配合夹板弹片使用(建议间距为300mm)。

30x30 1 Grille slot
30x30 1槽



30x45 2 Grille slots
30x45 2槽



Connector selection
推荐连接件

Machine Guard System
机械防护系统样册



Bolt Connector3.81.M8.20
螺栓连接件



Anti-torsion Subsequent Nut2.32.08.M6
防扭后置螺母



End Cap for grille profile4.13.30.3030.SM
改制防护网端盖

Description 产品描述	Moment of Inertia 惯性矩 Ix(cm ⁴)	Moment of Inertia 惯性矩 Iy(cm ⁴)	Moment of Resistance 弯矩 Wx(cm ³)	Moment of Resistance 弯矩 Wy(cm ³)	Mass 重量 (kg/m)	Part No. 订购编号
Protective Grille Profile PG30 30x30 1 Grille slot 防护网型材 30系列 30x30 1槽	3.4	2.5	2.2	1.6	1.0	1.22.30.030030.01
Protective Grille Profile PG30 30x45 2 Grille slots 防护网型材 30系列 30x45 2槽	7.2	4.7	4.8	2.1	1.3	1.22.30.030045.02