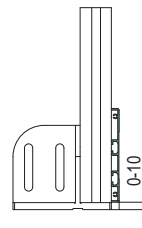
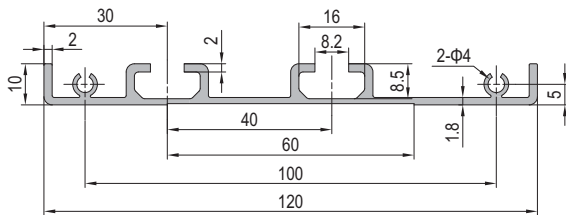
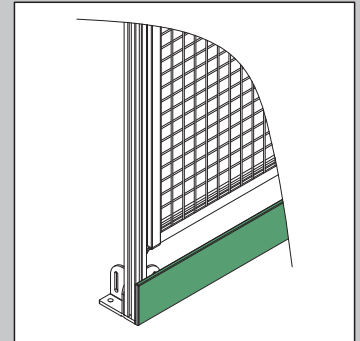


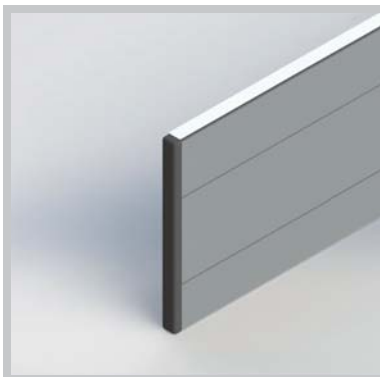
Guard rail kick plate profile 防护踢脚板型材

Material: 6063-T5 Surface treatment: satin anodized
材质: 6063-T5 表面处理: 本色磨砂阳极氧化。
The kick plate profile is installed at the lower part of the machine guard unit to keep the small component or other objects outside and ensure the stability and good appearance of the unit.
防护踢脚板型材安装于防护单元底部, 可以防止小型零件或其他物体进入防护单元内部, 使整体防护单元更加可靠, 美观。



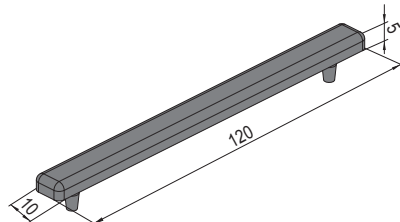
✳ The machine guard kick plate can be adjusted up and down in 10mm range.
防护踢脚板型材与地面调整距离为10mm。

Description 描述	Moment of Inertia 惯性矩 $I_x(\text{cm}^4)$	Moment of Inertia 惯性矩 $I_y(\text{cm}^4)$	Moment of Resistance 弯矩 $W_x(\text{cm}^3)$	Moment of Resistance 弯矩 $W_y(\text{cm}^3)$	Mass 重量(kg/m)	Part No. 订购编号
Guard rail kick plate profile 防护踢脚板型材	0.33	48.3	0.66	8.1	0.95	1.42.10.010120.01



Machine guard kick plate end cap 防护踢脚板端盖

To prevent staff from any injury and improve profile end appearance.
端盖可以预防划伤,使型材更美观。
Material and Color: black ABS
材质: ABS 颜色: 黑色



Description 描述	Mass 重量(g)	Part No. 订购编号
Machine guard kick plate end cap 防护踢脚板端盖	5	4.12.30.10.010120