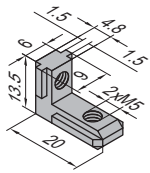


Connecting Elements  
连接件

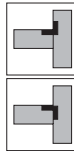
Inner Bracket (with top thread)  
槽内直角件(含顶丝)

Inner bracket is an elegant and economic means of constructing door, window and machine guard frames.  
槽内直角件因其低成本、实用高效, 被广泛地应用于门窗、防护框架的组装。

Material: bracket-diecast zinc top thread-zinc plated steel  
材质: 直角件-锌合金 顶丝-碳钢镀锌

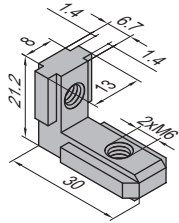
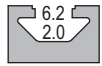


M5x6

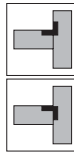


Inner Bracket/槽内直角件-6-A  
3.41.06A

Inner Bracket/槽内直角件-6-B  
3.41.06B

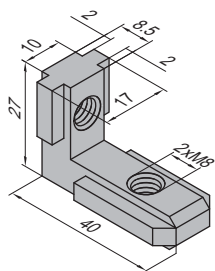


M6x8

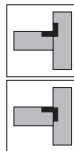


Inner Bracket/槽内直角件-8-A  
3.41.08A

Inner Bracket/槽内直角件-8-B  
3.41.08B

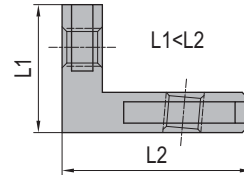
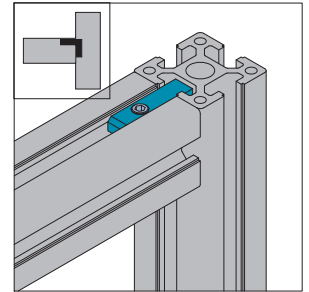
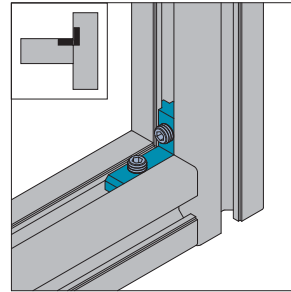


M8x10

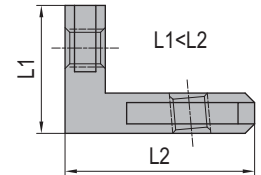


Inner Bracket/槽内直角件-10-A  
3.41.10A

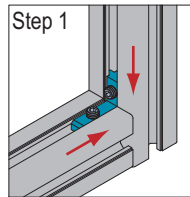
Inner Bracket/槽内直角件-10-B  
3.41.10B



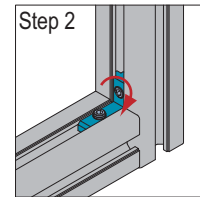
Type A



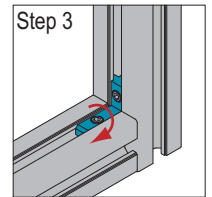
Type B



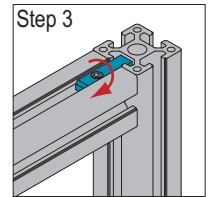
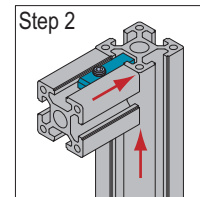
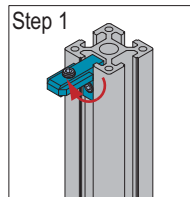
Step 1  
set parts in position  
置入槽口



Step 2  
tighten L1 top thread  
锁紧L1顶丝



Step 3  
tighten L2 top thread  
锁紧L2顶丝



Description 产品描述	Mass 重量 (g/pcs)	Part No. 订购编号
Inner Bracket-6-A (with top thread) 槽内直角件-6-A(含顶丝)	6	3.41.06A
Inner Bracket-6-B (with top thread) 槽内直角件-6-B(含顶丝)	6	3.41.06B
Inner Bracket-8-A (with top thread) 槽内直角件 8-A(含顶丝)	18	3.41.08A
Inner Bracket-8-B (with top thread) 槽内直角件-8-B(含顶丝)	18	3.41.08B
Inner Bracket-10-A (with top thread) 槽内直角件-10-A(含顶丝)	36	3.41.10A
Inner Bracket-10-B (with top thread) 槽内直角件-10-B(含顶丝)	36	3.41.10B