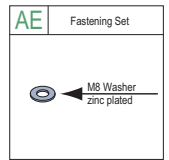
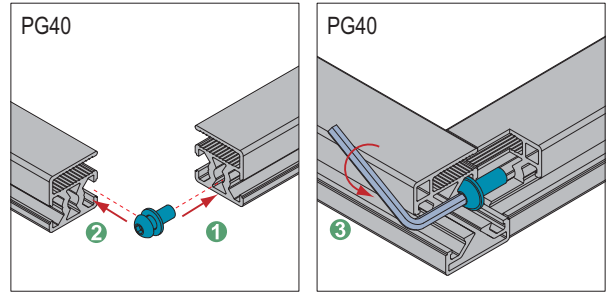
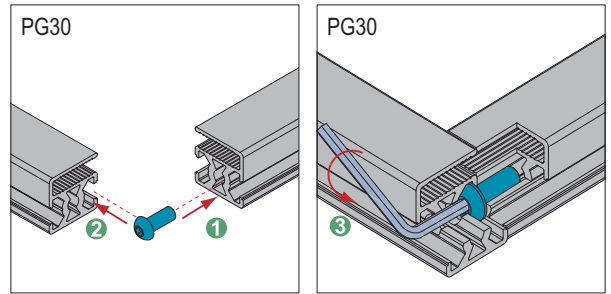
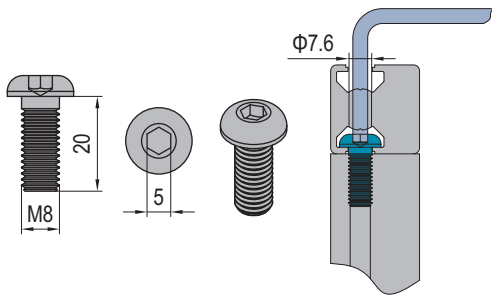


Connecting Elements for Protective Grille Unit  
防护网单元连接组件

Bolt Connector  
螺栓连接件

A simple and economic way to replace end connector with more connection reliability.  
连接方式更简单便捷。

Material: zinc plated steel  
材质：碳钢镀锌

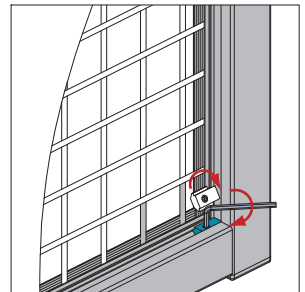
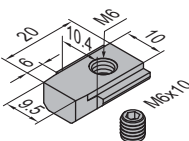
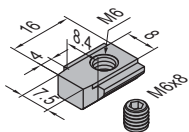


Description 描述	Fastening Set 紧固组件	Mass 重量(g)	Part No. 订购编号
Bolt Connector-PG30 螺栓连接件-30系列		10	3.81.M8.20
Bolt Connector-PG40 螺栓连接件-40系列	AE	12	3.81.M8.20.ST

Anti-torsion Subsequent Nut  
防扭后置螺母

Prevent torsion from connecting profiles with screw connectors  
防扭后置螺母用于防止型材之间安装时或受外力时的扭转。

Material: nickel plated steel  
材质：碳钢镀镍



Description 描述	Mass 重量(g)	Part No. 订购编号
Anti-torsional Subsequent Nut-8 (with top thread) 8槽防扭后置螺母(含凹端顶丝)	10	2.32.08.M6
Anti-torsional Subsequent Nut-10 (with top thread) 10槽防扭后置螺母(含凹端顶丝)	15	2.32.10.M6